

# Hampshire Water Transfer and Water Recycling Project Environmental Statement - Figure 13.8 Tourism and leisure

**VOLUME NUMBER: 6**

**PLANNING INSPECTORATE SCHEME NUMBER: WA010002**

**APPLICATION DOCUMENT REFERENCE: 6.3**

**APFP REGULATION: 5(2)(a)**

May 2026

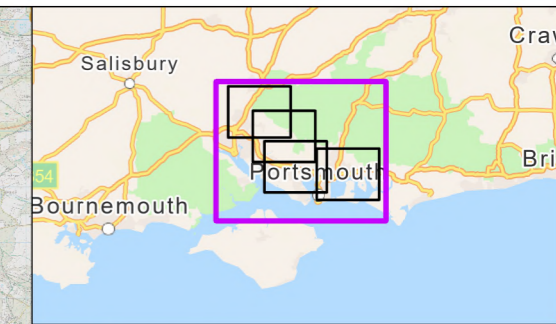
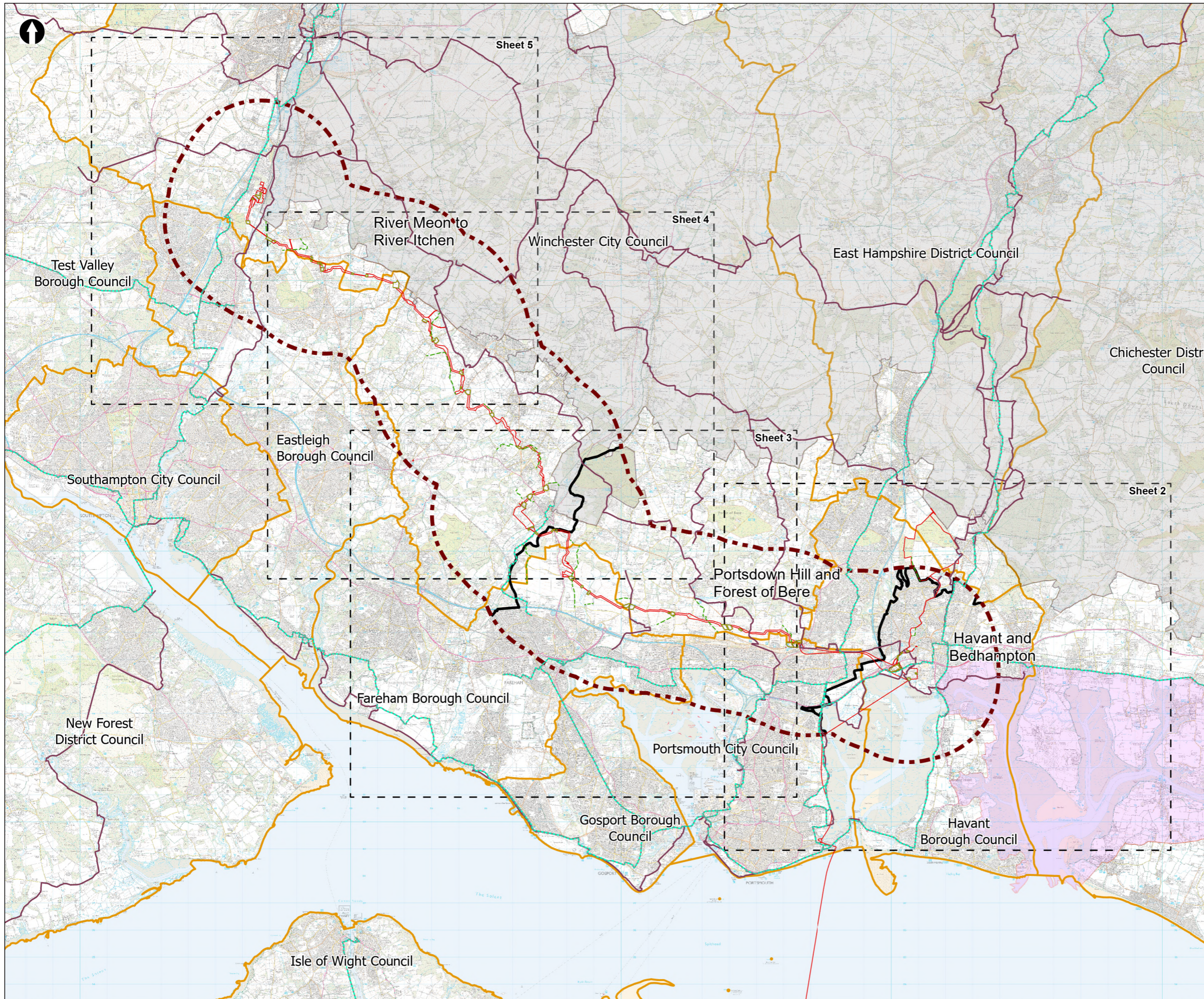
Version 0



from  
**Southern  
Water** 

The Southern Water logo consists of the words 'Southern' and 'Water' stacked vertically in a blue, sans-serif font. To the right of the text is a graphic of three stylized, wavy blue lines representing water.





- Order Limits
- Landscape Study Area 3km
- Principal sections within the study area
- Sheet extent boxes 1:50k
- Local planning authorities
- South Downs National Park
- Chichester Harbour National Landscape
- Water Recycling Plant Site
- Construction compounds
- Cycle Routes**
- National Cycle Network (NCN)
- Public Rights of Way (PRoW)\***
- PRoW which are promoted routes (Long Distance Routes)
- PRoW which are not promoted routes

\*Only PRoW numbers identified as receptor groups within Chapter 13 have been labelled.

Coordinate system: British National Grid; Datum: OSGB 1936  
 Data sources: © Crown copyright and database rights 2026 Ordnance Survey 0100031673. Sources: Esri, TomTom, Garmin, FAO, NOAA, USGS, © OpenStreetMap contributors, and the GIS User Community

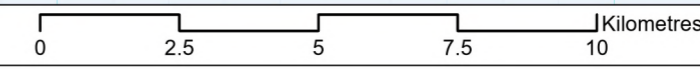
PROJECT TITLE  
 Hampshire Water Transfer and Water Recycling Project

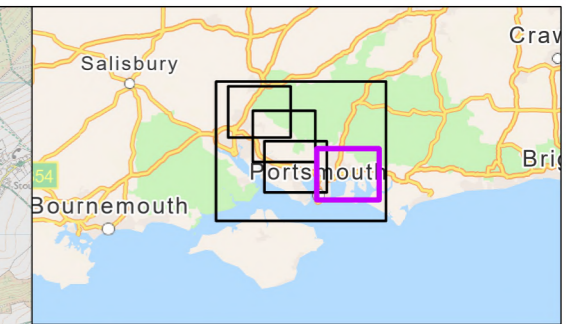
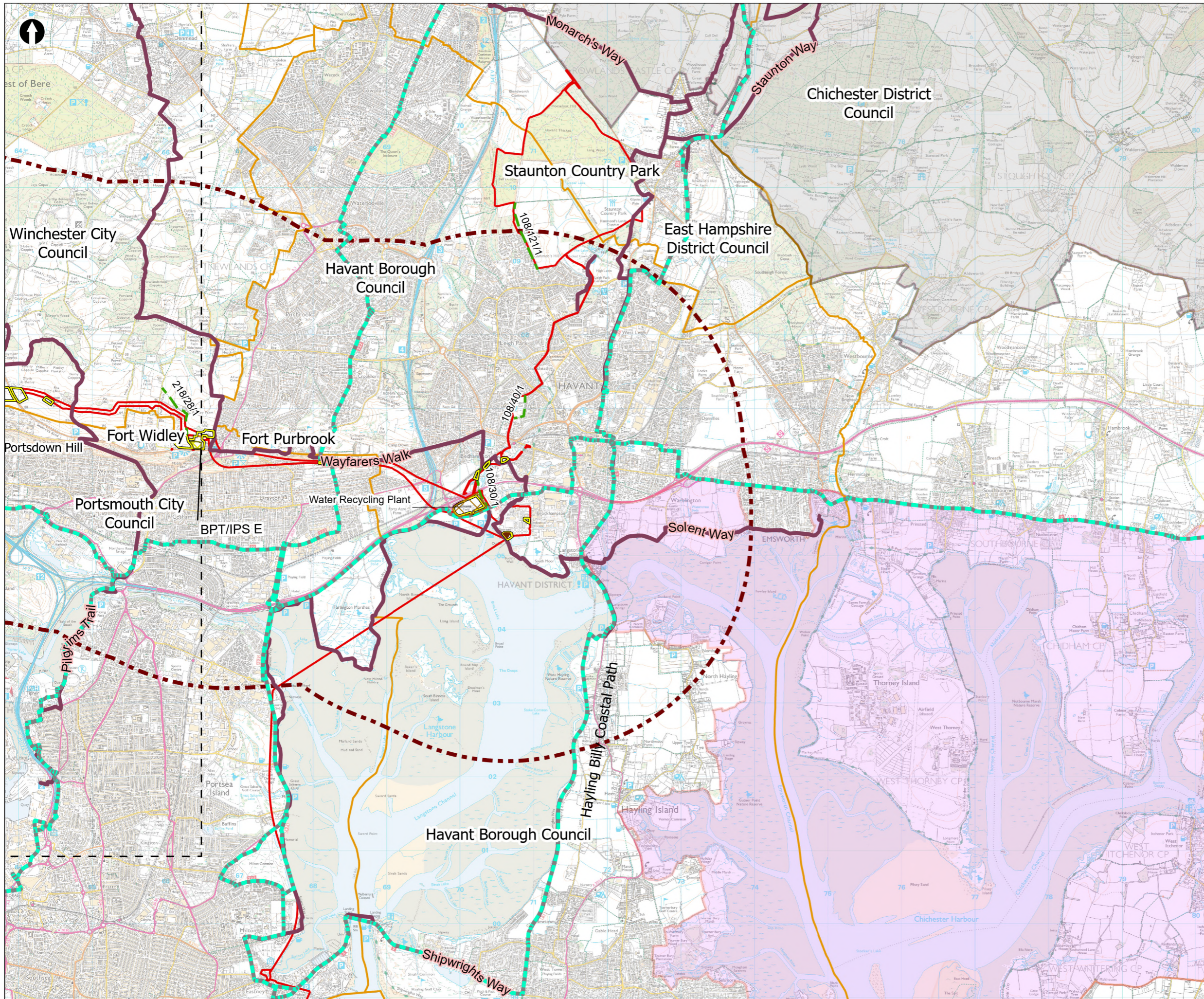


Figure 13.8  
 Tourism and leisure  
 Sheet 1 of 5

Drawn <b>DL</b>	GIS Checked <b>MW</b>	Checked <b>MP</b>	Approved <b>AK</b>
Scale at A3 <b>1:136,000</b>	Status <b>Final</b>	Revision <b>05</b>	Security <b>STD</b>

Drawing Number  
**PC5223-RHD-ES-ZZ-D-Z-0135**





- Order Limits
  - Landscape Study Area 3km
  - Sheet extent boxes 1:50k
  - Local planning authorities
  - South Downs National Park
  - Chichester Harbour National Landscape
  - Water Recycling Plant Site
  - Construction compounds
  - Limits of Deviation for Budds Farm Pumping Station
  - Cycle Routes**
  - National Cycle Network (NCN)
  - Public Rights of Way (PRoW)\***
  - PRoW which are promoted routes (Long Distance Routes)
  - PRoW which are not promoted routes
  - Above Ground Plant**
  - Break Pressure Tank & Intermediate Pumping Station
- \*Only PRoW numbers identified as receptor groups within Chapter 13 have been labelled.

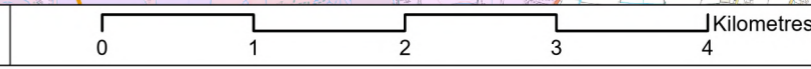
Coordinate system: British National Grid; Datum: OSGB 1936  
 Data sources: © Crown copyright and database rights 2026 Ordnance Survey 0100031673. Sources: Esri, TomTom, Garmin, FAO, NOAA, USGS, © OpenStreetMap contributors, and the GIS User Community

PROJECT TITLE  
 Hampshire Water Transfer and Water Recycling Project

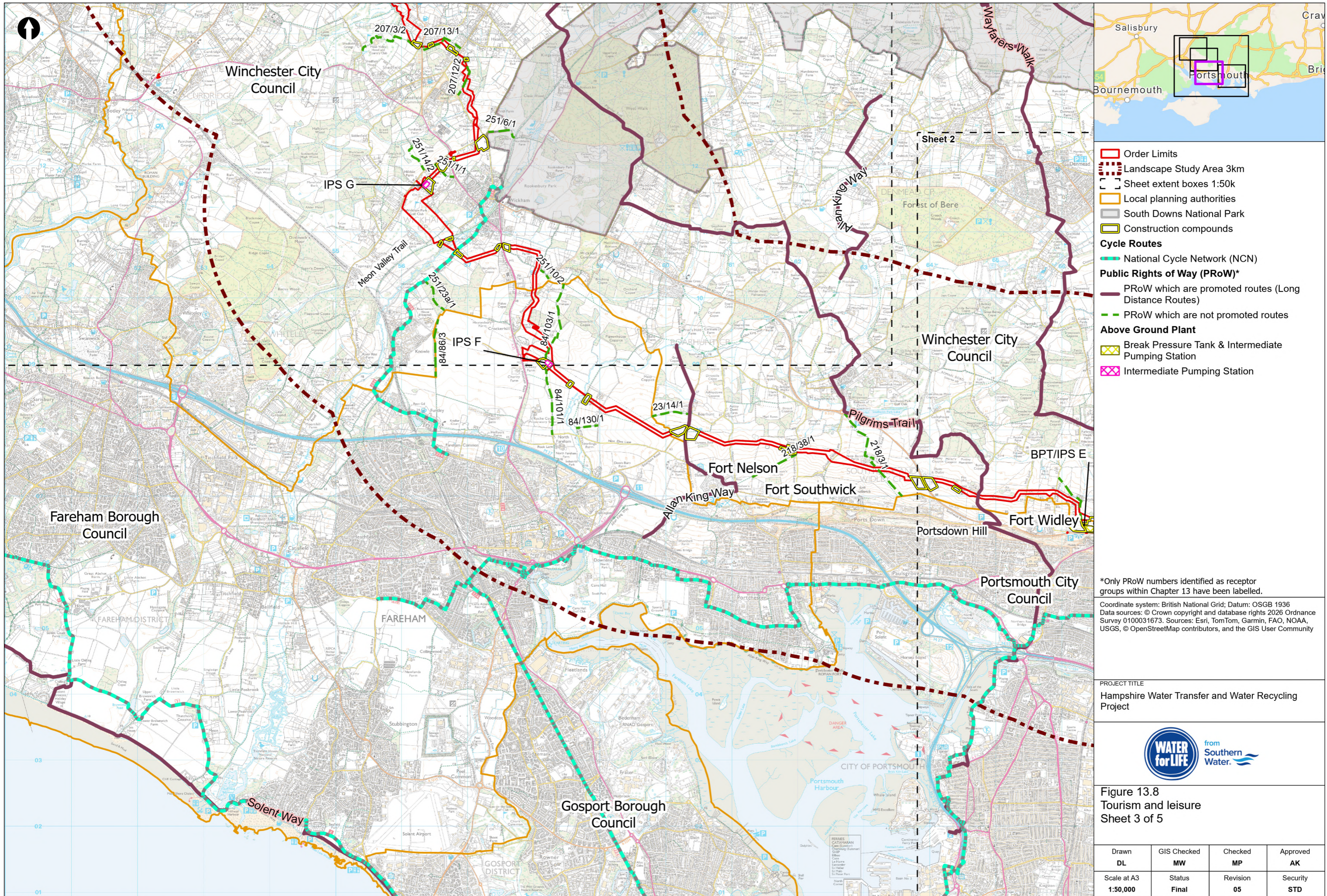


Figure 13.8  
 Tourism and leisure  
 Sheet 2 of 5

Drawn <b>DL</b>	GIS Checked <b>MW</b>	Checked <b>MP</b>	Approved <b>AK</b>
Scale at A3 <b>1:50,000</b>	Status <b>Final</b>	Revision <b>05</b>	Security <b>STD</b>



Drawing Number  
**PC5223-RHD-ES-ZZ-D-Z-0135**



- Order Limits
- Landscape Study Area 3km
- Sheet extent boxes 1:50k
- Local planning authorities
- South Downs National Park
- Construction compounds
- Cycle Routes**
- National Cycle Network (NCN)
- Public Rights of Way (PRoW)\***
- PRoW which are promoted routes (Long Distance Routes)
- PRoW which are not promoted routes
- Above Ground Plant**
- Break Pressure Tank & Intermediate Pumping Station
- Intermediate Pumping Station

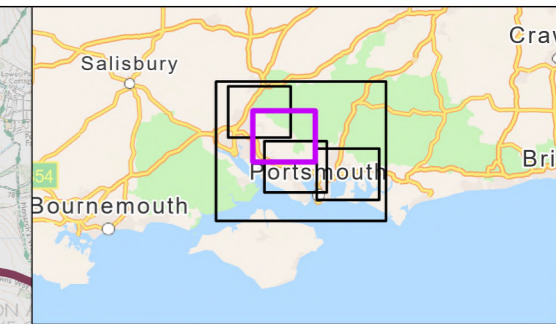
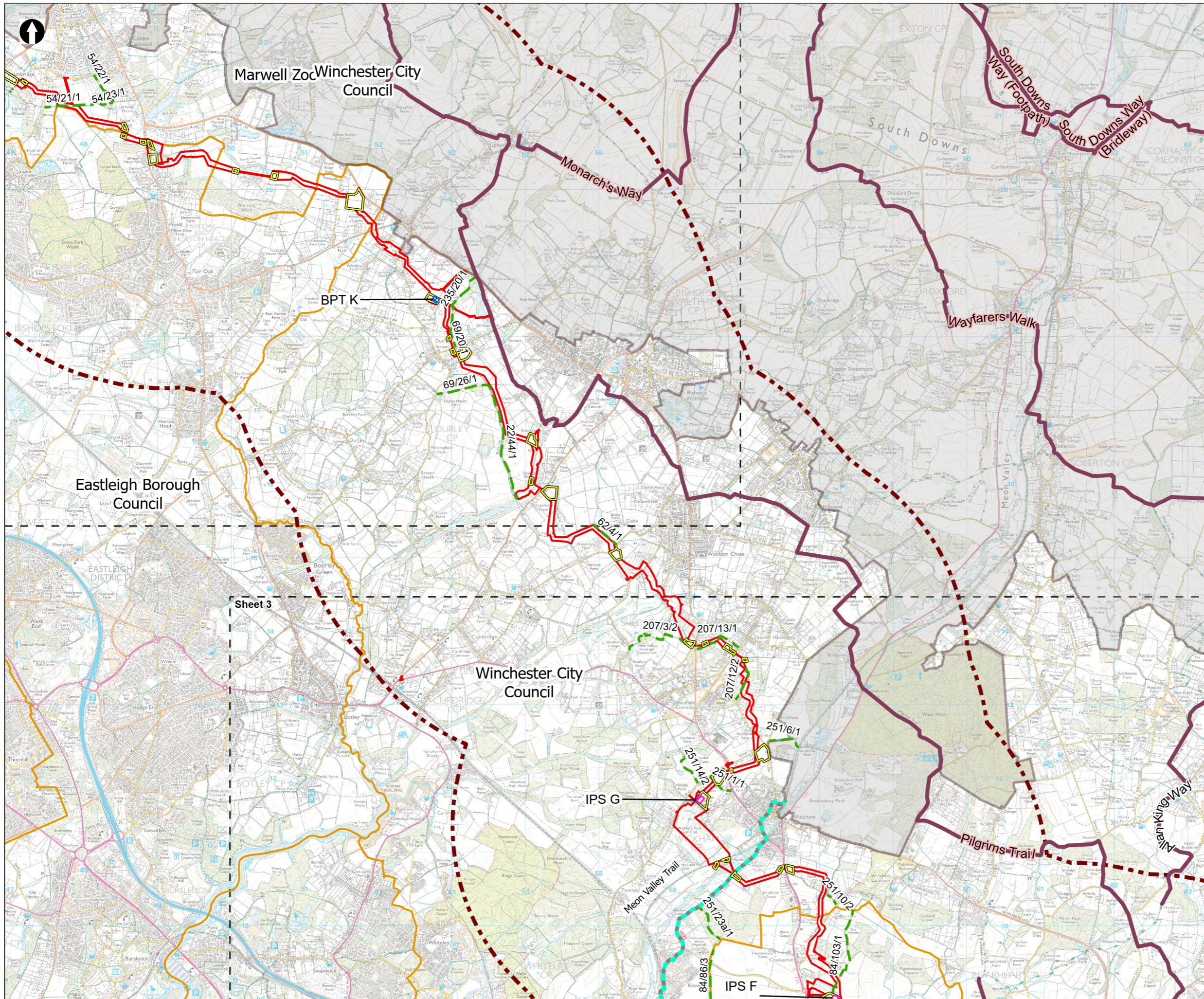
\*Only PRoW numbers identified as receptor groups within Chapter 13 have been labelled.  
 Coordinate system: British National Grid; Datum: OSGB 1936  
 Data sources: © Crown copyright and database rights 2026 Ordnance Survey 0100031673. Sources: Esri, TomTom, Garmin, FAO, NOAA, USGS, © OpenStreetMap contributors, and the GIS User Community

PROJECT TITLE  
 Hampshire Water Transfer and Water Recycling Project



Figure 13.8  
 Tourism and leisure  
 Sheet 3 of 5

Drawn <b>DL</b>	GIS Checked <b>MW</b>	Checked <b>MP</b>	Approved <b>AK</b>
Scale at A3 <b>1:50,000</b>	Status <b>Final</b>	Revision <b>05</b>	Security <b>STD</b>



- Order Limits
- Landscape Study Area 3km
- Sheet extent boxes 1:50k
- Local planning authorities
- South Downs National Park
- Construction compounds
- Cycle Routes**
- National Cycle Network (NCN)
- Public Rights of Way (PRoW)\***
- PRoW which are promoted routes (Long Distance Routes)
- PRoW which are not promoted routes
- Above Ground Plant**
- Break Pressure Tank
- Intermediate Pumping Station

\*Only PRoW numbers identified as receptor groups within Chapter 13 have been labelled.

Coordinate system: British National Grid; Datum: OSGB 1936  
 Data sources: © Crown copyright and database rights 2026 Ordnance Survey 0100031673. Sources: Esri, TomTom, Garmin, FAO, NOAA, USGS, © OpenStreetMap contributors, and the GIS User Community

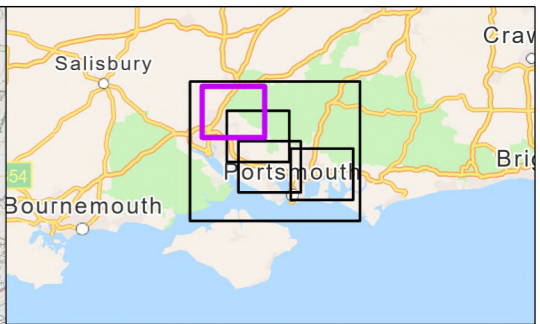
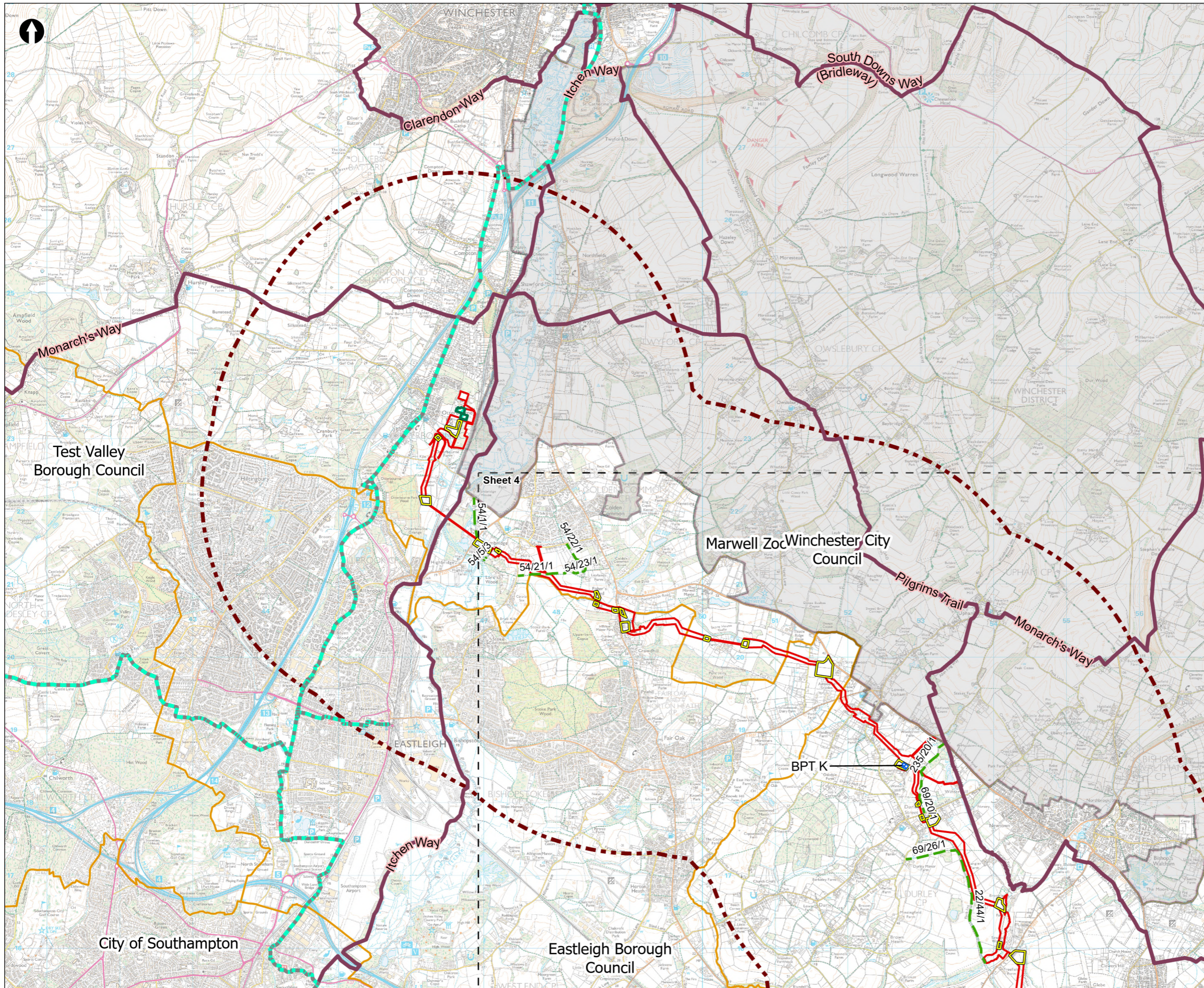
PROJECT TITLE  
 Hampshire Water Transfer and Water Recycling Project



Figure 13.8  
 Tourism and leisure  
 Sheet 4 of 5

Drawn DL	GIS Checked MW	Checked MP	Approved AK
Scale at A3 1:50,000	Status Final	Revision 05	Security STD

Drawing Number  
 PC5223-RHD-ES-ZZ-D-Z-0135



- Order Limits
- Landscape Study Area 3km
- Sheet extent boxes 1:50k
- Local planning authorities
- South Downs National Park
- Construction compounds
- Limits of Deviation for Otterbourne INNS Treatment Plant
- Cycle Routes**
- National Cycle Network (NCN)
- Public Rights of Way (PRoW)\***
- PRoW which are promoted routes (Long Distance Routes)
- PRoW which are not promoted routes
- Above Ground Plant**
- Break Pressure Tank

\*Only PRoW numbers identified as receptor groups within Chapter 13 have been labelled.

Coordinate system: British National Grid; Datum: OSGB 1936  
 Data sources: © Crown copyright and database rights 2026 Ordnance Survey 0100031673. Sources: Esri, TomTom, Garmin, FAO, NOAA, USGS, © OpenStreetMap contributors, and the GIS User Community

PROJECT TITLE  
 Hampshire Water Transfer and Water Recycling Project



Figure 13.8  
 Tourism and leisure  
 Sheet 5 of 5

Drawn DL	GIS Checked MW	Checked MP	Approved AK
Scale at A3 1:50,000	Status Final	Revision 05	Security STD

